

FOLDER # III

SECRET

15-18870

FROM CPM

15-III

C.S.D.I.C.(U.K)
S.I.R. 1303

DECLASSIFIED
Authority EO 13526

THIS REPORT IS SECRET

Report on information obtained from PW M/526 Fw KRAUSE
PGR 200, captured GLIZZIANO, 13 Jul 44

ZOSSEN (HNW/LNA)

PREAMBLE

1. PW served at ZOSSEN from the time of arrival of the HNW/LNA until 1 Feb 44. He worked in the USA-England department. He seems reliable and all information was given willingly. This report has been compiled in conjunction with M.I.8.

LAY-OUT

NATURE OF SURROUNDING TERRAIN

2. PW had not explored much of the ground around the camp, his impression is that it is thickly wooded and sandy.

METHODS OF APPROACH

3. Air Nearest airfield BANGSDORF. No others known in area.
4. Rail Electric train from BERLIN to BANGSDORF, steam train on to ZOSSEN.
5. Road Follow main road South through ZOSSEN and continue till tall barbed wire fence similar to the fence around Fw cage is seen on the left. This is the boundary of the barracks. To reach the HNW/LNA it is best to go in through the second gate, passing the main guard room. Drive into the camp leaving the MF lines on your right and carry on until the cinema is on one side of the road and the baths on the other. Carry forward over the cross roads bearing slightly left. Continue along here until another wire fence is seen. This encloses "MAYBACH ONE" the camp of the OKH West. Drive in and turn right. The HNW/LNA is the third building on the right, clearly marked "A 10".

BUILDINGS

6. The HNW/LNA was in the special OKH compound of the large barracks, at ZOSSEN. The only "Y" operational block was A 10. The billets and messes for "Y" personnel were in the main part of the barracks:

Officers and Warrant Officers	lived in L 5 (Lieutenant House No.5)
NCOs and Men	lived in M 6.
Civilian Women	lived in house opposite L 5.

7. Building had ground floor, 1st floor and small second floor. It had two cellars the deeper being used for T. room and store, the other was devoid of furniture and used as a shelter.
- All rooms had telephones to the ZOSSEN camp exchange. Only a few of the phones were able to make calls to outside exchanges. The code name for the camp exchange was ZERFLIN.
- TP had direct lines to Leitstelle FHQ, to PARIS, to (? ATHENS) and a connection to the Army TP exchange.
- There were 3 TPs and 1 Geheim Schreiber.

8. The building was gas proof and has its own air conditioning plant. All doors were steel and gas proof. There were very few windows in the building. There was an emergency power supply situated in the cellars.

ENTRY

ENTRANCES

9. There were four or five entrances along the main road. These were closed by barriers, opened only by the guard to let MT pass through.

PROCEDURE OF GAINING ADMITTANCE

10. For a pass holder PW had two passes about 4 x 5 inches, the one for admittance to the barracks, the other to Maybach I. The passes were changed about every three months. The barrack pass had a broad diagonal stripe on it in colour, whereas the Maybach pass had a large coloured circle.
11. For a visitor All visitors had to enter by the main gate and report to the guard room. The guard examined the visitors' "Dienstreise Ausweis" and then phoned the department concerned. This department sent an escort who took the visitor to the Camp Commandant (just West of entrance to Maybach I). The Camp Commandant issued a pass for Maybach. The visitor would then probably be escorted to the Adm Officer and would pass through the hands of the Chief woman (a General's daughter) and so into the office of the Kommandeur.

DEFENCES

WIRE FENCES

12. Barrack area wired along main road. PW knew nothing of the back of the camp but suggested that it was not wired.
- Maybach I and similar encampment South surrounded by wire fence.

CONCRETE POSTS

13. PW knew of only five.

FLAK TOWER

14. There was a Flak tower in the middle of Maybach I. PW assumes that this could be used against ground targets.
- Flak Vierling mounted.

AIR RAID SHELTERS

15. Provided on a generous scale.

DEFENCE FORCES

16. PW gives the strength of the guard as "about one [unclear]. The guard were old men with rifles, often had no ammunition. Some of the guard duties were done by civilians of the "Wach und Schliess Gesellschaft" who had dogs and pistols. The guard provided one man for each gate, plus a moving picket of two men



DECLASSIFIED
Authority EO 13526

- 16. (contd.)
he has, however, always been of the opinion that the men on guard were too old and inefficient.
- 17. The total military strength in the event of a raid would soon have mounted to:
 - 1 Guard Bn, old and inefficient soldiers
 - 2 or 3000 officers and ORs working in the barracks all with revolvers and rifles but untrained
 - 400 experienced officers from the fronts on a course in the barracks
 - "A large force" 15 minutes away (? Wuensdorf).

EQUIPMENT

- 18. No special machinery was used in HNW/LNA. There was, however, a public address outfit by which the Kommandeur could call all the rooms from a microphone in his office.

METHODS

SOURCE OF MATERIAL

- 19. Material reaches HNW/LNA from all Western intercept stations. The service from PARIS was done by courier daily, from other stations material came up by air bag either to OKH Kurier Stelle BERLIN or to the Camp Commandant at ZOSSEN.

NATURE OF WORK DONE

- 20. TA, translation of broken material, personalities, captured WT documents, handling PL traffic a liaison with I C (Block A 1).

DISPOSITION OF PRODUCT WORK

- 21. Urgent results were phoned through to I C, remainder of work was issued in Daily Reports to OKH West and to FHQ. The cipher material passed through the "Verkehrsauswertung" to have the stations identified by call sign and frequency before being sent on to Jüterbog.

KNOWLEDGE OF OTHER SIGINT HQs

- 22. FW had no knowledge of other sigint HQs, he knew of the existence of In7/VI, OKW Chi and MARSTALL but nothing more.

C.S.D.I.C.(U.K)
5 Dec 44

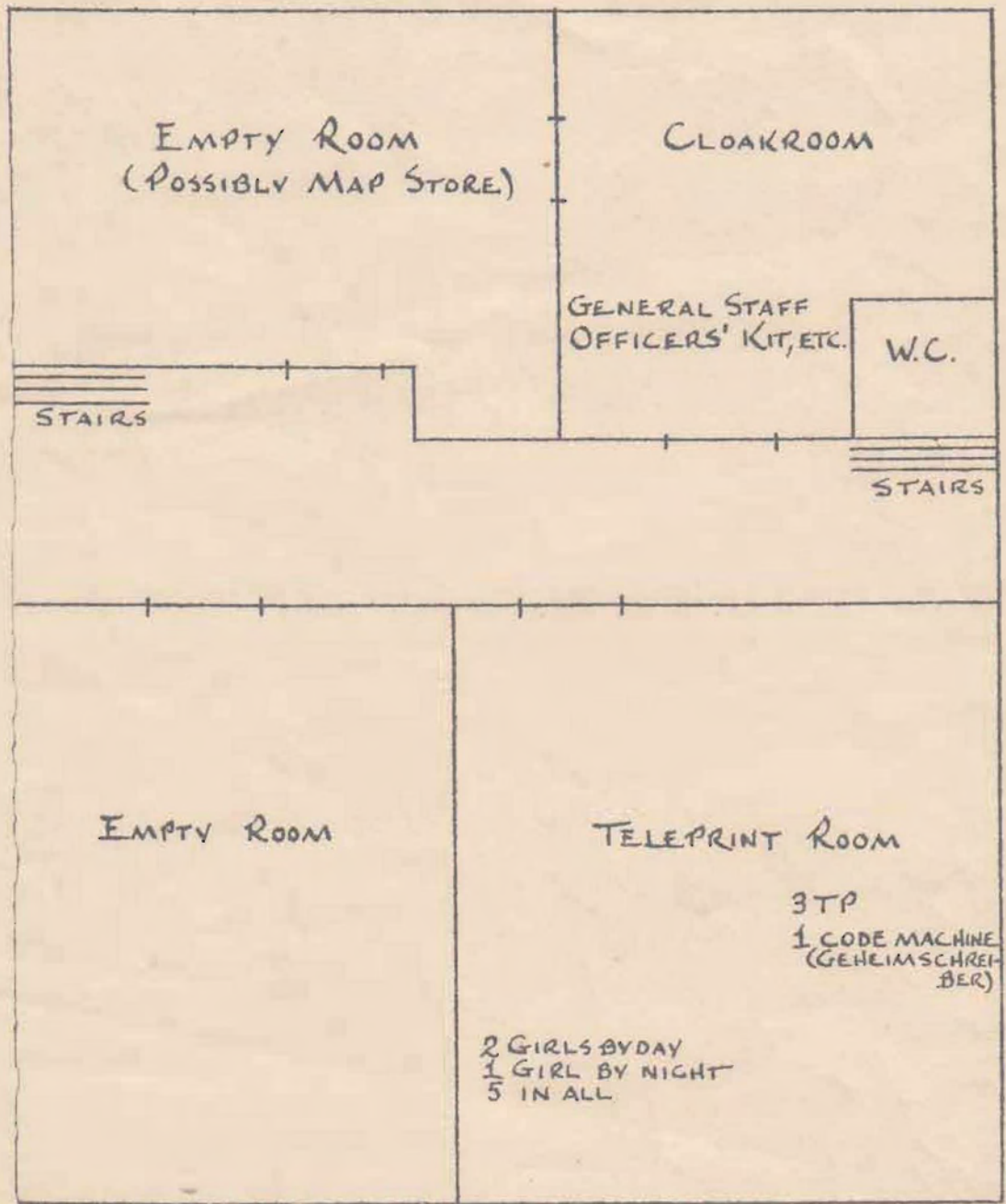
DISTRIBUTION:
 M.I.19(a) War Office (60 copies)
 N.I.D. Admiralty (4 copies)
 A.D.I.(K) Air Ministry (6 copies)

5 Dec 44

SECRET
S.I.R. 1303

ANNEX 1

DEEP CELLAR

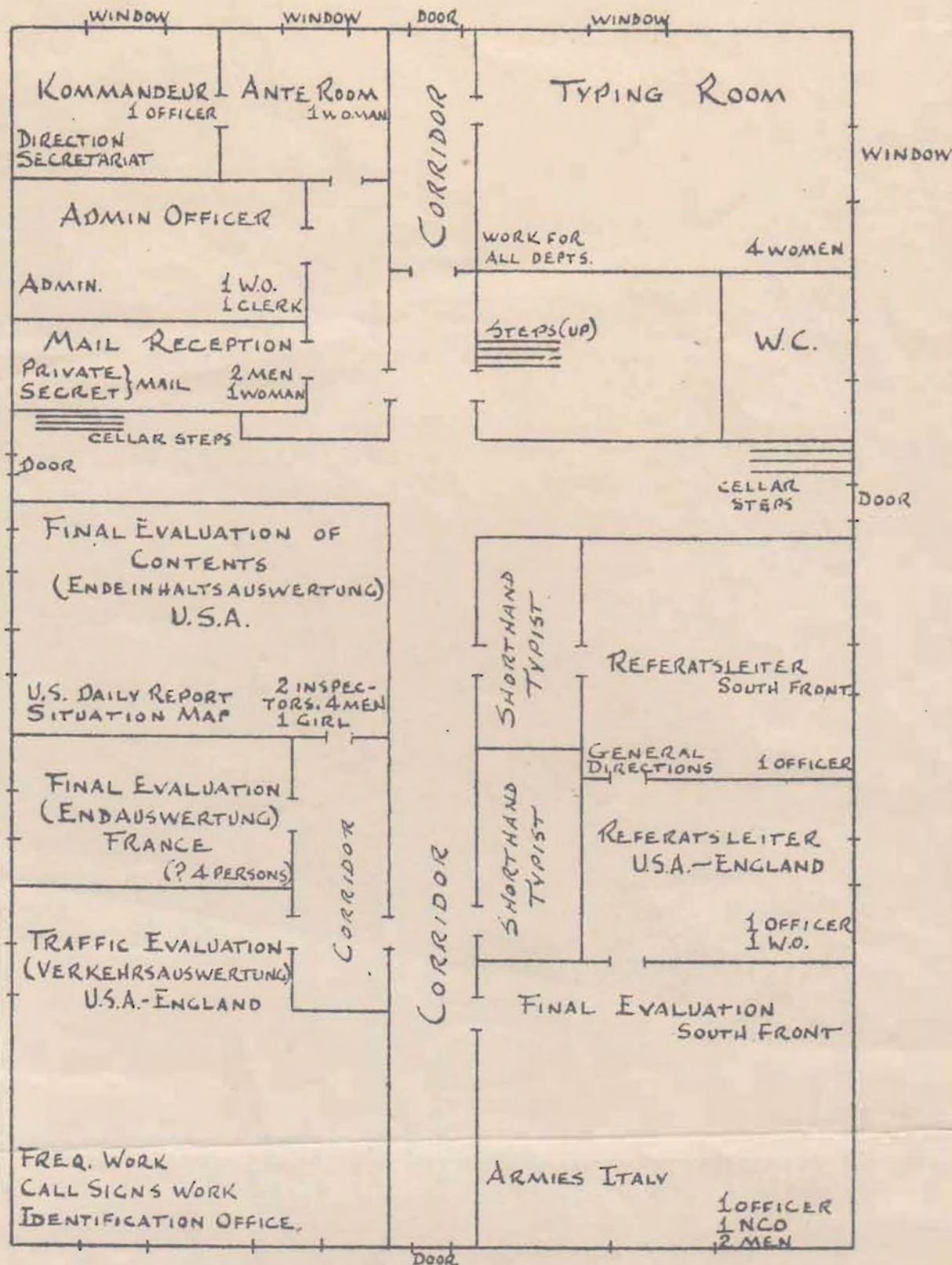


IN PLACED ON THIS LEVEL -
AIR CONDITIONING
ELECTRIC POWER PLANT

DECLASSIFIED
Authority EO 13526

ANNEX 2

PARTERRE
FRONT



DECLASSIFIED
Authority EO 13526

ANNEX 3

1ST FLOOR
FRONT

DECLASSIFIED
Authority EO 13526

